

No. 3 Series is a typeface for a variety of large scale applications including titling, visual identities, books, magazines, mobile patterns and websites.

It has the characteristics of humanist letters, borrows from periods before and long after the Renaissance – e. g. the increased contrast – and is drawn into a contemporary context.

It covers three widths in large steps, Normal, Narrow and Poster. Furthermore *No. 3 Series* is to a large extent influenced by writing and cursive writing, which inspired the first letters that were cut in metal.

The texts in this specimen are assembled from poetry of Flora Jane Thompson.

Release	2021
Weights	Regular, Bold, Heavy
Normal	Regular, Bold, Heavy
Narrow	Regular, Bold, Heavy
Poster	Regular, Bold, Heavy
Format	Opentype
Version	1.166

© Road To Venice Type. 2022.
All rights reserved.

mail@r-vtype.com

Normal

rvt

W
A
A
a

Regular
Bold
Heavy

Weights

Regular

ABCDEFGH
abcdefghijk
012345678!

Bold

ABCDEFGH
abcdefghijk
012345678!

Heavy

ABCDEFGH
abcdefghijk
012345678!

Selected glyphs

LEAR
K&WU
2gifs

Regular

20 / 23 pt

SHADE TO rescue
him Captive in its,
shadowy bars,
Glimmering multi-
tudinous stars-
Burn to orange;
pale, and die,
As dawn light 90

38 / 38 pt / -5 tracking

AS 36 DAWN-light
steals across they

65 pt / -10 tracking

SKY; lark

126 pt / -10 tracking

Shrill

Bold

124 pt / -10 tracking

Birch

65 pt / -5 tracking

Trees dip

36 / 38 pt

THEIR bows to 4.1®
slake Day's green

20 / 23 pt

FIRES IN THE 105
enchanted lake.
Along the shore,
beneath the
trees, A drift of
wan anemones
Bow their heads
1234567890<>?()

Features

Ligatures

PLANQUE
COMMINGE
MOTETS VIALE TLO
LASANGA BRAZZAVILLE

Overview of all ligatures

AE AE E THE I J LA L L L L O M N AN N
CC G O Q UR V T A T L Th ZZ ct st

Arrows

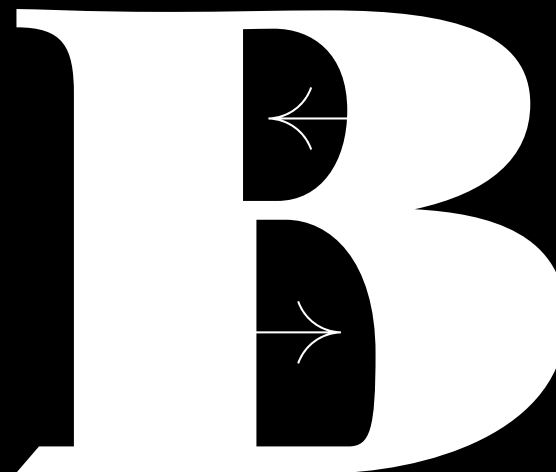


Numero sign

No

Features

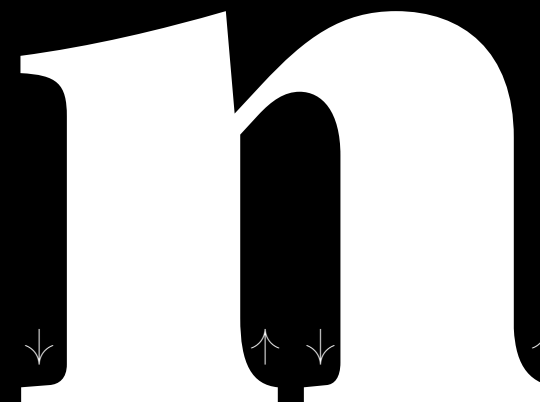
Displaced counters



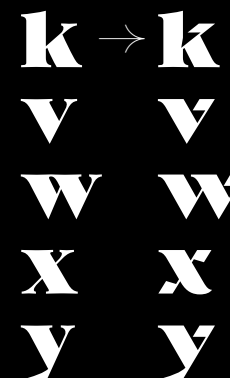
Sharp inlets in the complete No. 3 Series



Asymmetrical serifs



Stylistic alternates in the complete No. 3 Series



No. 3 Series is a typeface for a variety of large scale applications including titling, visual identities, books, magazines, mobile patterns and websites.

It has the characteristics of humanist letters, borrows from periods before and long after the Renaissance – e. g. the increased contrast – and is drawn into a contemporary context.

It covers three widths in large steps, Normal, Narrow and Poster. Furthermore *No. 3 Series* is to a large extent influenced by writing and cursive writing, which inspired the first letters that were cut in metal.

The texts in this specimen are assembled from poetry of Flora Jane Thompson.

Release	2021
Weights	Regular, Bold, Heavy
Normal	Regular, Bold, Heavy
Narrow	Regular, Bold, Heavy
Poster	Regular, Bold, Heavy
Format	Opentype
Version	1.166

mail@r-vtype.com

© Road To Venice Type. 2022.
All rights reserved.

Narrow

rvt

W
A
Aa
M

Regular Bold

Heavy

Weights

Regular

ABCDEFGHIJabcdefghijk

012345678!

Bold

ABCDEFGHIJabcdefghijk

012345678!

Heavy

ABCDEFGHIJabcdefghijk

012345678!

Selected glyphs

LE ← ARK&
Wáí 2 gí b

Regular

76 pt

I'LL SHAPE you rhymes like 42.9

130 pt / -4 tracking

PAPER boats and

252 pt / -6 tracking

TO sail on

Bold

252 pt / -4 tracking

Fancy's 2

126 pt

SEA frail transient

76 pt

THINGS; And when you tire I'll

Features

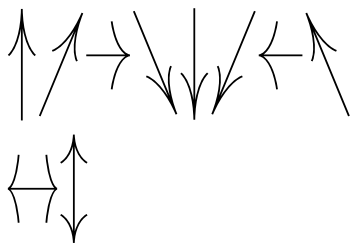
Ligatures

PLANCHETTES
TABULARIZE BLAHO

Overview of all ligatures

A A E E T H E T L A E L L L O M N A N N O C G O O Q u r v T a T L Th Z ct st

Arrows



Numero sign



Features

Displaced counters

Asymmetrical serifs



No. 3 Series is a typeface for a variety of large scale applications including titling, visual identities, books, magazines, mobile patterns and websites.

It has the characteristics of humanist letters, borrows from periods before and long after the Renaissance – e. g. the increased contrast – and is drawn into a contemporary context.

It covers three widths in large steps, Normal, Narrow and Poster. Furthermore *No. 3 Series* is to a large extent influenced by writing and cursive writing, which inspired the first letters that were cut in metal.

The texts in this specimen are assembled from poetry of Flora Jane Thompson.

Release	2021
Weights	Regular, Bold, Heavy
Normal	Regular, Bold, Heavy
Narrow	Regular, Bold, Heavy
Poster	Regular, Bold, Heavy
Format	Opentype
Version	1.166

mail@r-vtype.com

© Road To Venice Type. 2022.
All rights reserved.

Poster

rvt

Poster

Aa

Poster

Poster

Weights

Regular

A B C D E F G H I J K L M N O P Q R S T U V W X Y Z
a b c d e f g h i j k l m n o p q r s t u v w x y z
0 1 2 3 4 5 6 7 8 9 !

Bold

A B C D E F G H I J K L M N O P Q R S T U V W X Y Z
a b c d e f g h i j k l m n o p q r s t u v w x y z
0 1 2 3 4 5 6 7 8 9 !

Heavy

A B C D E F G H I J K L M N O P Q R S T U V W X Y Z
a b c d e f g h i j k l m n o p q r s t u v w x y z
0 1 2 3 4 5 6 7 8 9 !

Selected glyphs

E R W S T U V W X Y Z
L A M N O P Q R S T U V W X Y Z

Regular

194 pt

NOW that April is here, With 1964

324 pt / -2 tracking

HER Blackthorn 4.000

Bold

378 pt

I will say to my 95

194 pt

DEAR: Now that April is here, 270

Heavy

194 pt

With her smile and her tear | 0.9

320 pt

TO THE GREENWOOD

Character set

Uppercase

A B C D E F G H I J K L M N O P Q R S T U V W X Y Z

Lowercase

a b c d e f g h i j k l m n o p q r s t u v w x y z

Accented

À Á Â Ã Ä Å Æ Ç È É Ê Ë Ì Í Î Ï Ñ Ò Ó Ô Õ Ö × Ø Ù Ú Û Ü Ý Þ ß à á â ã

Currency, Math, Other

€ £ ¤ ¥ ¨ © ª « ¬ ® ¯ ° ± ² ³ ´ µ ¶ · ¸ ¹ º » ¼ ½ ¾

Figures

0 1 2 3 4 5 6 7 8 9

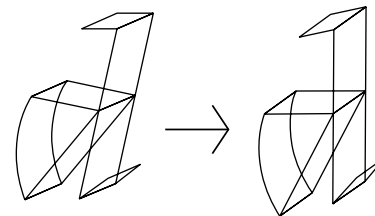
Punctuation

! " # \$ % & ' () * + , - . / : ; < = > ? [\] ^ _ ` { | } ~

Ligatures

fl ff fi fo fu ge gn gr gu gw

Upright Italics



The principle behind the shapes of the a, d, p and q of the lowercase alphabet is the rotation of an italic letter written with a broad nib pen. Italic handwriting usually has a slope which in this case is reduced to zero, but the underlying theoretical strokes are preserved.

Features

Ligatures

BRAMMIE

Overview of all ligatures

BRAMMIE

Arrows



Número sign



Features

Asymmetrical serifs

